

Areas to investigate

KS2 progress trend

- Writing progress was in the top 20% for at least two years for middle prior attainers.

KS2 progress in 2017

- Progress in writing was significantly* above average and in the highest 10%.

KS2 attainment

- In 2017, reading, writing and mathematics attainment of the expected standard was at or above national for the middle prior attainment group.

KS1 attainment

- In 2017, mathematics attainment of the expected standard was at or above national for the disadvantaged group.

Absence and exclusions

- The proportion of total fixed term exclusions was at or above national for three years (2013/14 to 2015/16). The proportion of repeat exclusions was at or above national for three years (2013/14 to 2015/16).

*statistical significance based on a 95% confidence interval

The areas to investigate indicate meaningful trends and issues from the data. These are based upon cohorts of more than ten pupils. Progress trend sentences are based on at least six pupils in each year. Progress and attainment figures based upon ten or fewer pupils will be displayed in grey throughout the report. Please note some areas to investigate are based on data not contained in this report.

2017	School	Floor	Coasting
Expected+ RWM %	53	(65)	(85)
Reading progress	2.3	(-5)	(-2.5)
Writing progress	3.4	(-7)	(-3.5)
Maths progress	2.0	(-5)	(-2.5)

Below floor standards in 2017? **No**

To be above the floor, the school needs to meet either the attainment or all of the progress element.

School coasting in 2017? **No**

The 'coasting' definition covers school performance over 3 years. A school is identified as coasting if:

- in 2015, fewer than 85% of pupils achieved level 4 in reading, writing and mathematics and below the median percentage of pupils made expected progress in all of reading, writing and mathematics, and
- in 2016 and 2017, fewer than 85% of children achieved the new expected standard and average progress made by pupils in reading or writing or mathematics was below the level set against the primary progress measures (shown in pink above).

Coasting element **2015** **2016** **2017**

For coasting element definitions see <https://www.gov.uk/government/publications/school-and-college-performance-tables-statements-of-intent>

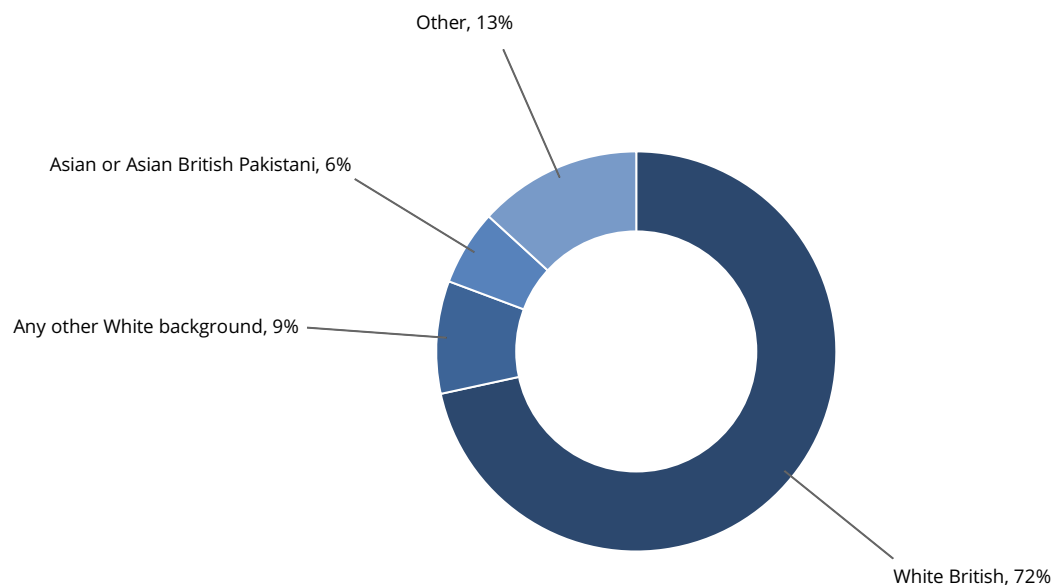
Phase of education: Primary
Headteacher: Karen Smith
Pupils: 249
Gender: Mixed
Special needs provision:

Local authority: Rotherham
Admissions policy: Not applicable
Ages: 3-11
Denomination: Does not apply

Schools details as of 3 January 2018

Ethnicity

This school has 10 of the 17 ethnic groups. Those with 5% or more are shown in the pie chart below.



School level trends

2017 Quintile

Bottom 20% Top 20%
 Q5 Q4 Q3 Q2 Q1

% girls

	2015	2016	2017	Q5	Q4	Q3	Q2	Q1
School	54	51	48	█	█	█	█	█
National	49	49	49	█	█	█	█	█

% eligible for FSM at any time during the past 6 years

	2015	2016	2017	Q5	Q4	Q3	Q2	Q1
School	50	46	46	█	█	█	█	█
National	26	25	24	█	█	█	█	█

% of pupils first language not/believed not to be English

	2015	2016	2017	Q5	Q4	Q3	Q2	Q1
School	23	24	21	█	█	█	█	█
National	19	20	21	█	█	█	█	█

% of pupils with SEN support

	2015	2016	2017	Q5	Q4	Q3	Q2	Q1
School	20.4	24.9	32.1	█	█	█	█	█
National	13.0	12.1	12.2	█	█	█	█	█

% of pupils with a SEN statement or EHC plan

	2015	2016	2017	Q5	Q4	Q3	Q2	Q1
School	0.4	1.1	1.2	█	█	█	█	█
National	1.4	1.3	1.3	█	█	█	█	█

School deprivation indicator

	2015	2016	2017	Q5	Q4	Q3	Q2	Q1
School	0.3	0.3	0.3	█	█	█	█	█
National	0.2	0.2	0.2	█	█	█	█	█

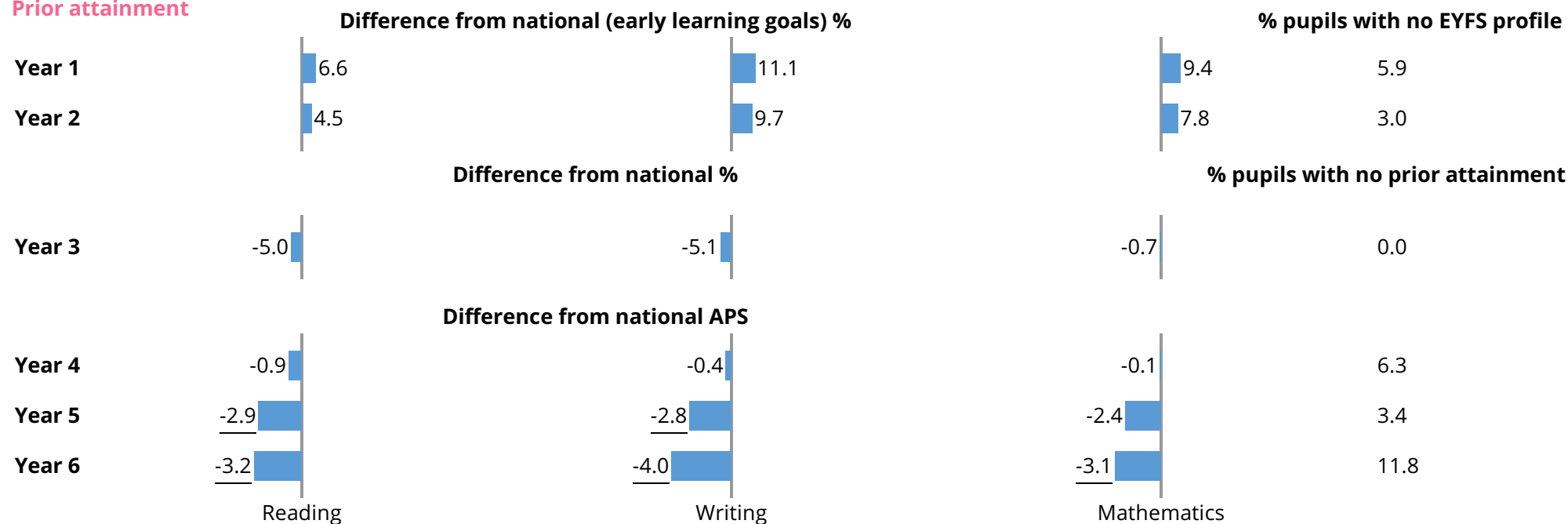
Number on roll

	2015	2016	2017	Q5	Q4	Q3	Q2	Q1
School	275	261	249	█	█	█	█	█
National	269	275	279	█	█	█	█	█

Year group data

	Number on roll	% girls	Nat	% FSM	Nat	% EAL	Nat	% SEN	Nat	Number of CLA
Year 1	32	53	49	31	19	16	21	34	12	0
Year 2	35	49	49	37	22	34	21	34	14	1
Year 3	35	40	49	63	26	14	21	37	15	0
Year 4	32	50	49	47	28	19	21	28	16	0
Year 5	29	52	49	72	30	17	20	45	16	1
Year 6	34	50	49	47	31	27	20	32	17	0

Prior attainment



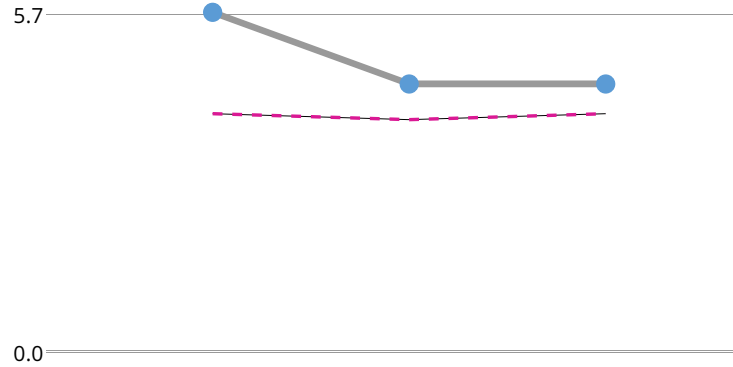
Underlined once: more than one standard deviation from national

Underlined twice: more than two standard deviations from national

This is historic data for pupils at January, for example current year 6 pupils will have been year 5 in 2017

Absence

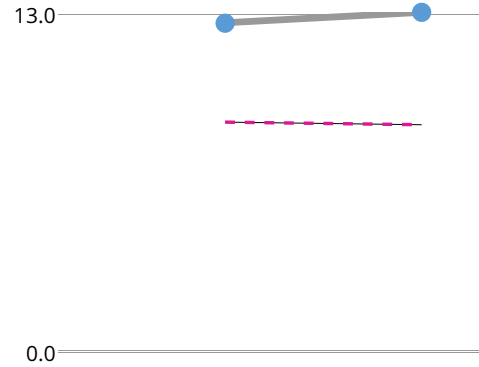
% of sessions missed



	2015	2016	2017
School %	5.7	4.5	4.5
Nat %	4.0	3.9	4.0
Cohort	230	231	216

Persistent absence

% of pupils who missed 10% or more sessions



	2016	2017
School %	12.6	13.0
Nat %	8.8	8.7
Cohort	231	216

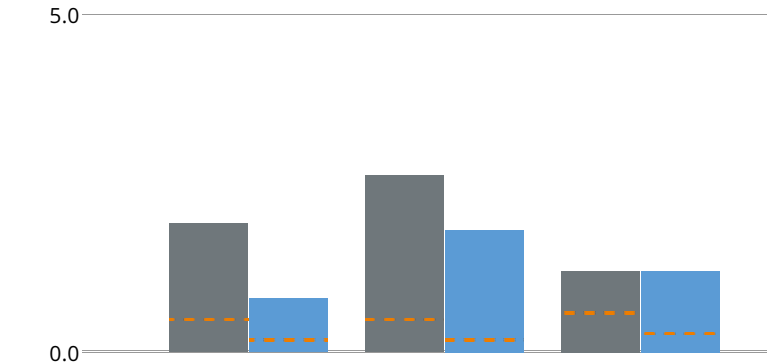
■ School ■ National

Absence indicators for 2015 and 2016 are based on two terms of data (autumn and spring) for mainstream schools and three terms of data for special schools. For 2017 absence indicators are based on two terms of data (autumn and spring) for both maintained and special schools.

Fixed term exclusions

% of pupils excluded

■ Total ■ Repeat ■ National



	2014		2015		2016	
School %	1.9	0.8	2.6	1.8	1.2	1.2
National %	0.5	0.2	0.5	0.2	0.6	0.3
Number	5	2	7	5	3	3

The national for fixed term exclusions is based on phase of education, such as primary or secondary.

Permanent exclusions

👤 = 1 pupil

Nat

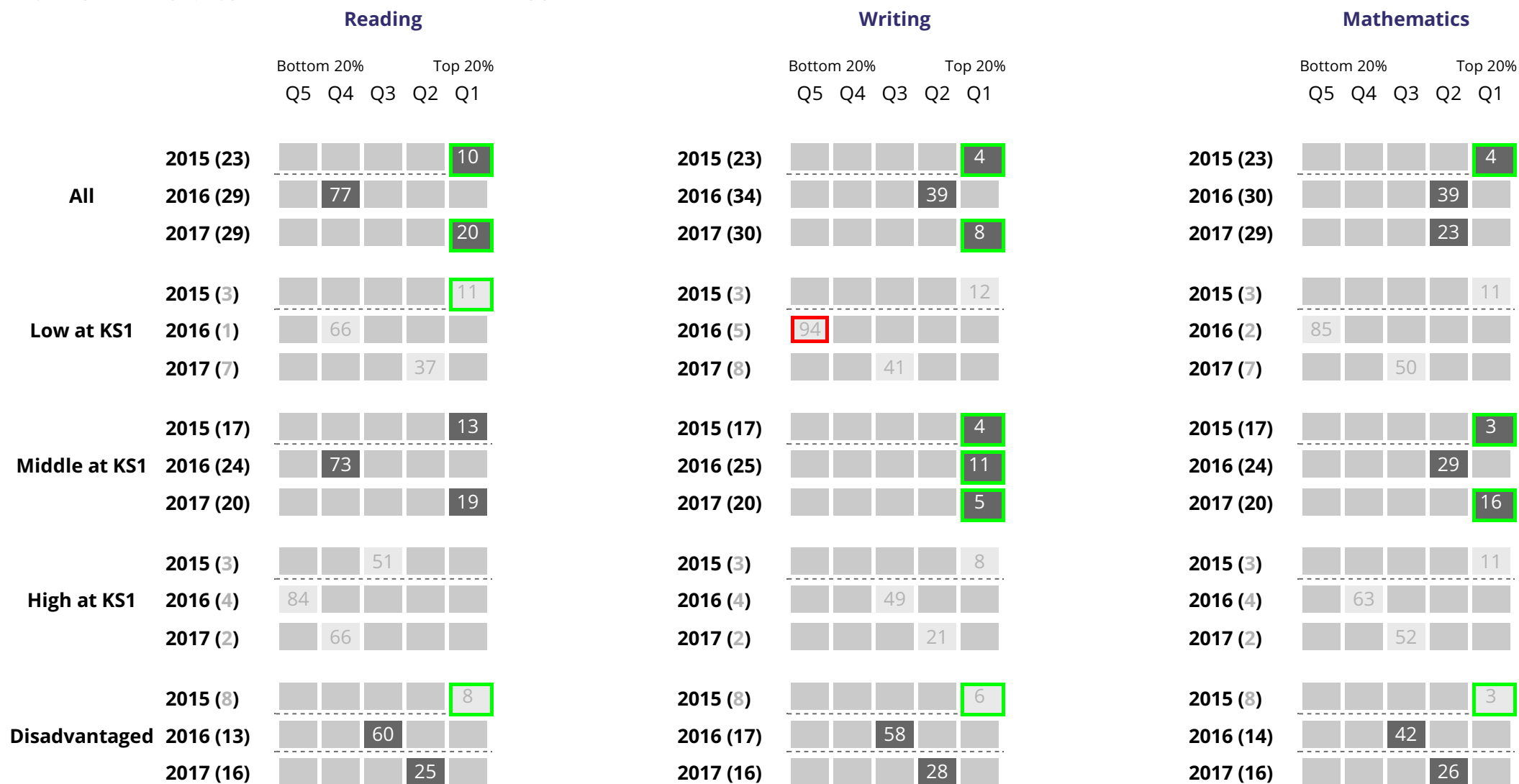
2016 (0) No permanent exclusions

2015 (0) 👤

The national average number of pupils (Nat) permanently excluded shown in orange is based on phase of education.

Trends over time

Progress quintiles displaying percentile rank (1-100 where 1 is the top percentile)

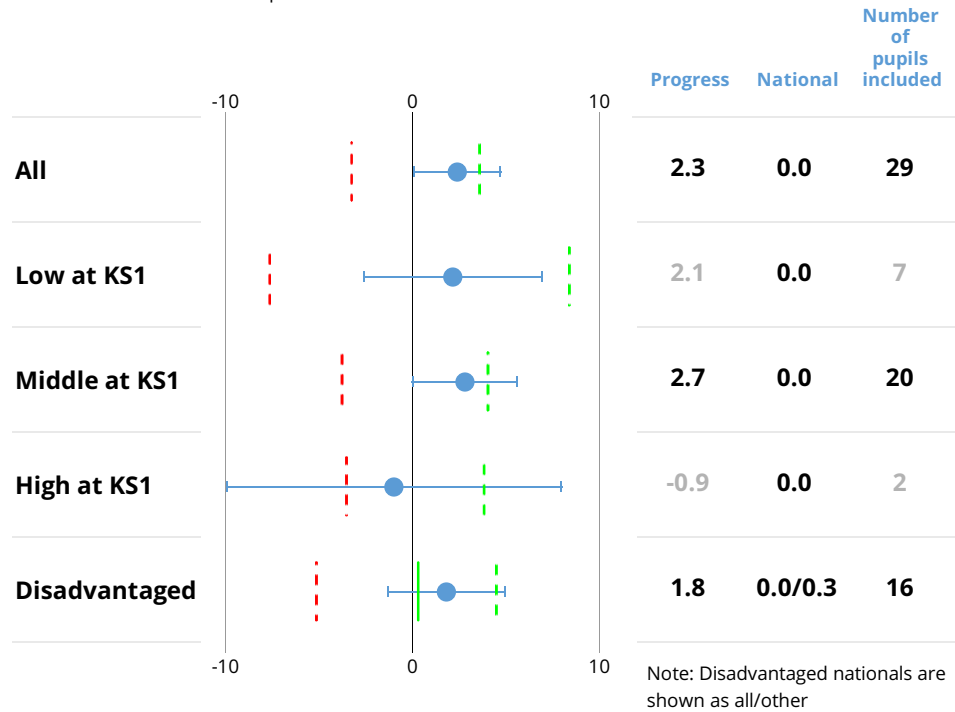


Note: 2015 quintiles and percentiles are based on value added measures; 2016 and 2017 quintiles are based on progress measures. Rank for the disadvantaged section is based on all schools' disadvantaged pupil groups, except for 2016 where it is based on RAISEonline methodology, which measured the group against all pupils. For quintile boundaries, see guidance documents on <https://www.gov.uk/government/collections/using-ofsteds-inspection-dashboard>. Statistical significance for disadvantaged pupils is against the national for other pupils.

() Cohort Significantly below national Significantly above national Change in methodology or calculations -----

Reading progress in 2017

--- Bottom 10% - - - Top 10% — Other national

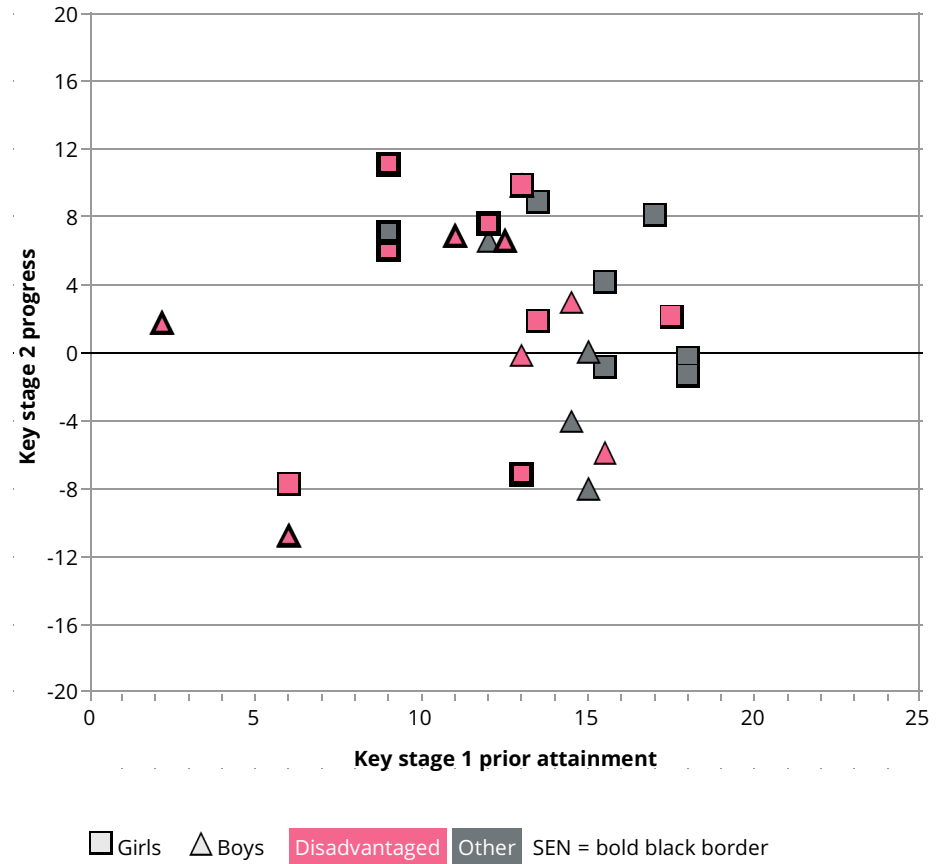


Significantly below national and in bottom 10%

Significantly above national and in top 10%

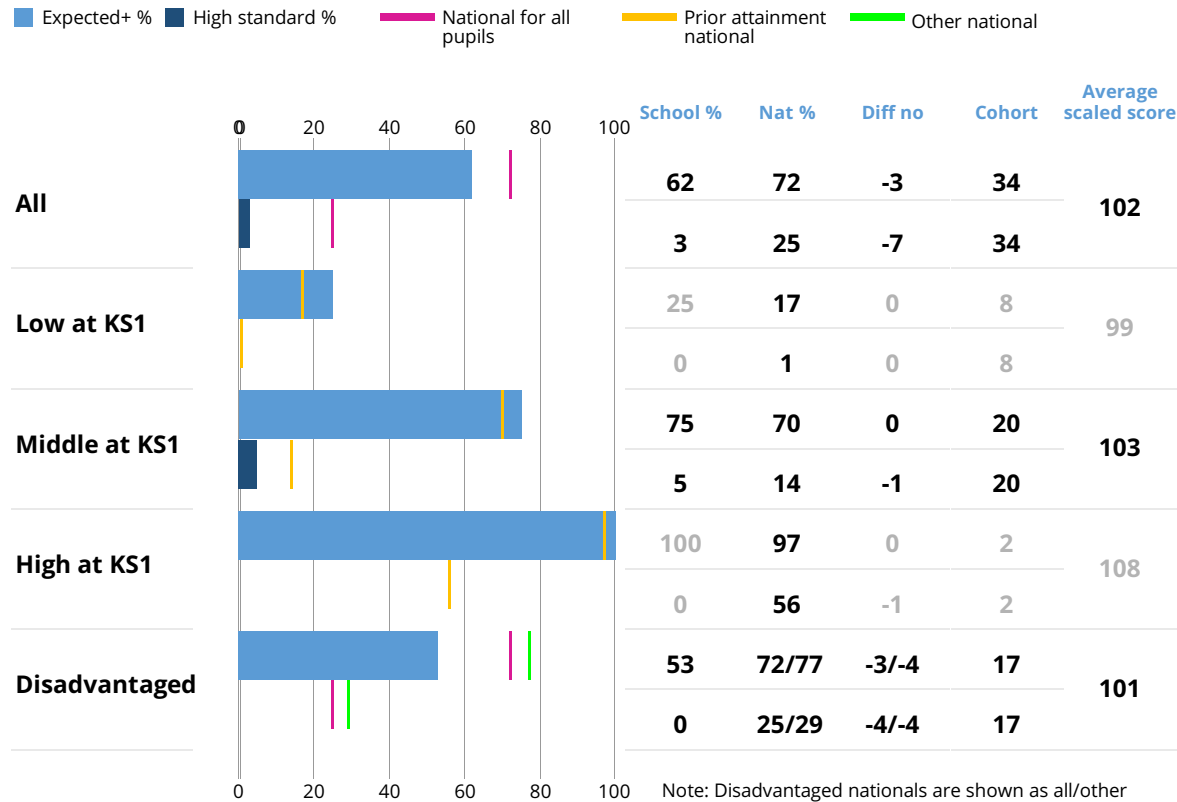
Shading based on statistical significance and top/bottom 10% will not be shown for special schools.

Reading progress scatterplot

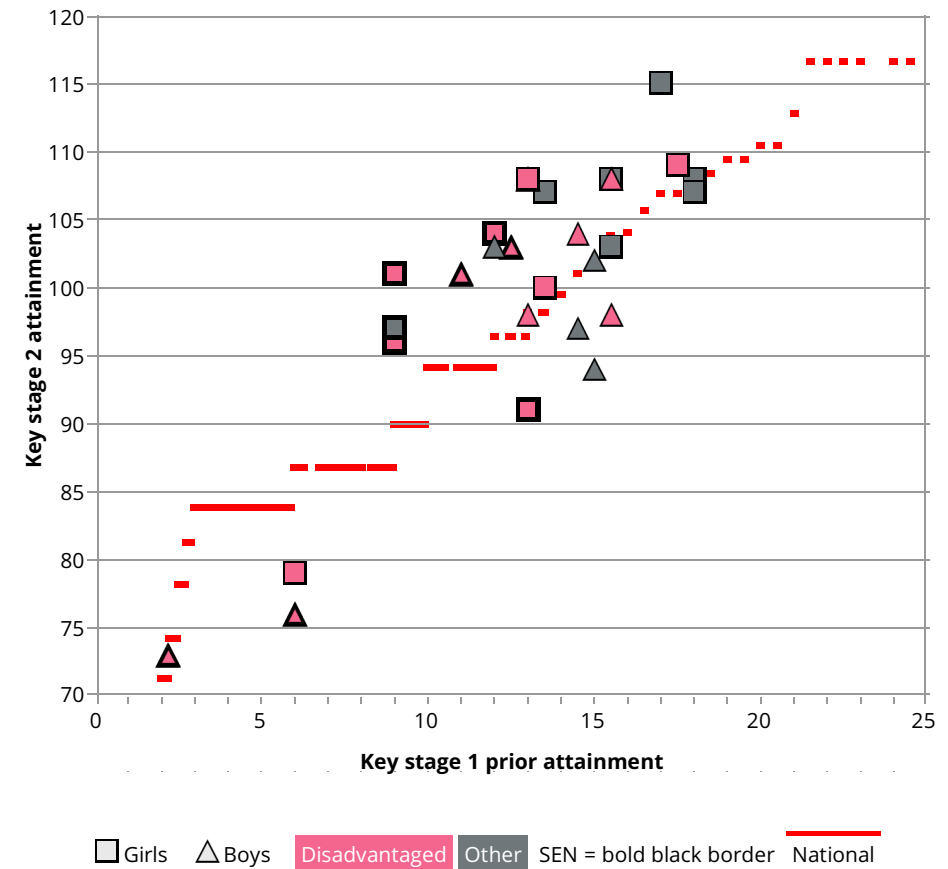


Top and bottom 10% values can be found in the percentile boundary spreadsheet alongside the guidance documents located here: <https://www.gov.uk/government/publications/using-ofsteds-inspection-dashboard-early-years-foundation-stage-profile-to-key-stage-4>. The values displayed above are rounded to one decimal place however all underlying calculations are based on unrounded data. Prior attainment is based on overall KS1 attainment.

Reading attainment in 2017



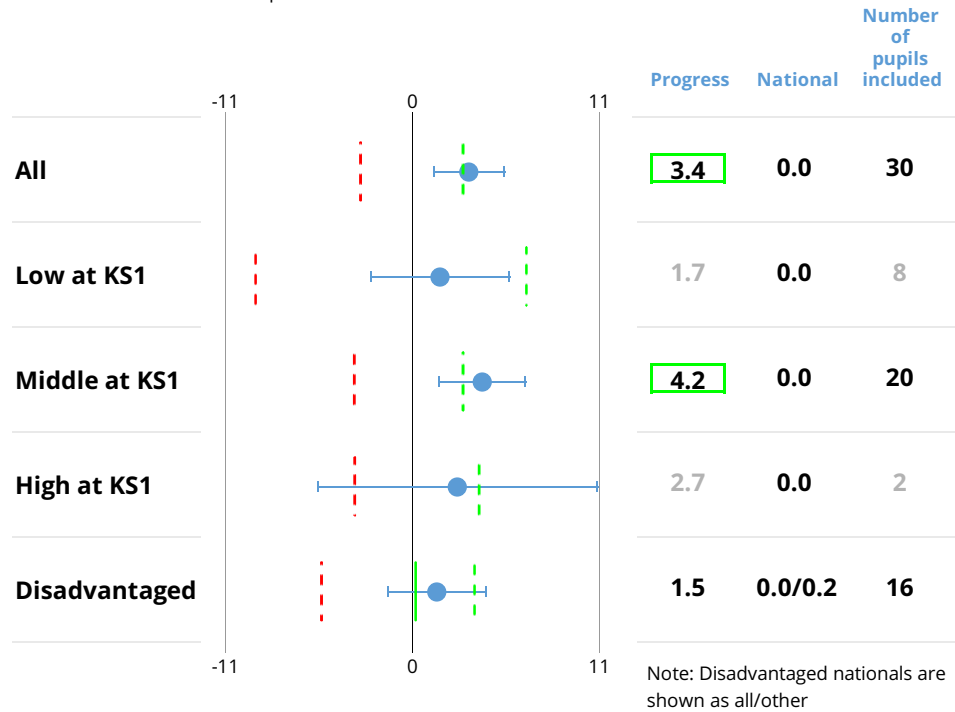
Reading attainment scatterplot



The values displayed above are rounded to one decimal place however all underlying calculations are based on unrounded data. The 'Diff no' value shows the number of pupils that the difference between school and national represents, and is always rounded down to a whole number. Prior attainment is based on overall KS1 attainment.

Writing (teacher assessment) progress in 2017

--- Bottom 10% - - - Top 10% — Other national



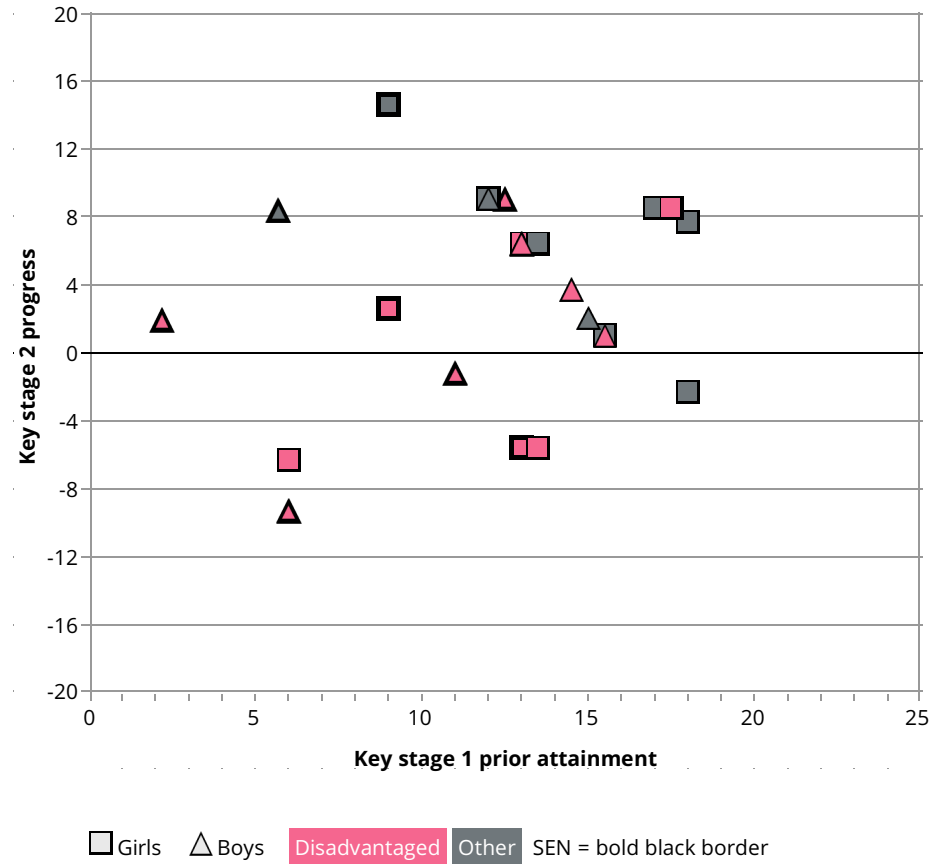
Significantly below national and in bottom 10%

Significantly above national and in top 10%

Shading based on statistical significance and top/bottom 10% will not be shown for special schools.

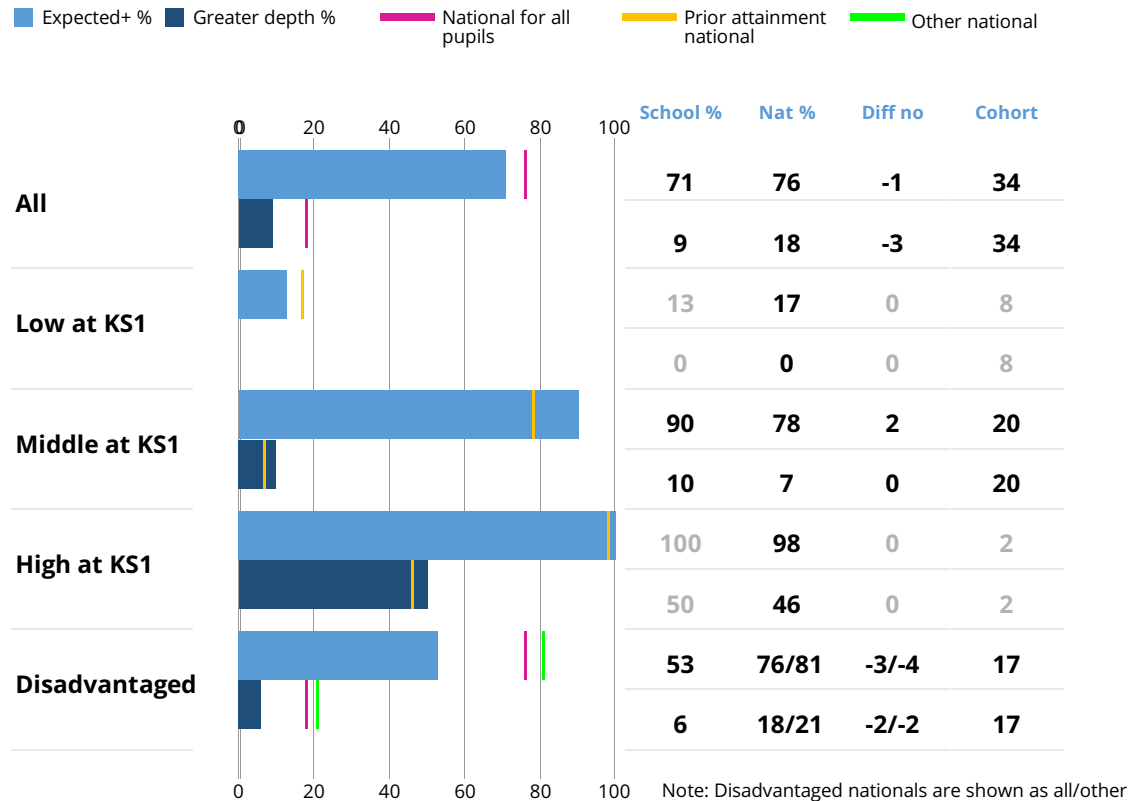
Writing data is based on teacher assessments. Users should be cautious when using this data.

Writing (teacher assessment) progress scatterplot



Top and bottom 10% values can be found in the percentile boundary spreadsheet alongside the guidance documents located here: <https://www.gov.uk/government/publications/using-ofsteds-inspection-dashboard-early-years-foundation-stage-profile-to-key-stage-4>. The values displayed above are rounded to one decimal place however all underlying calculations are based on unrounded data. Prior attainment is based on overall KS1 attainment.

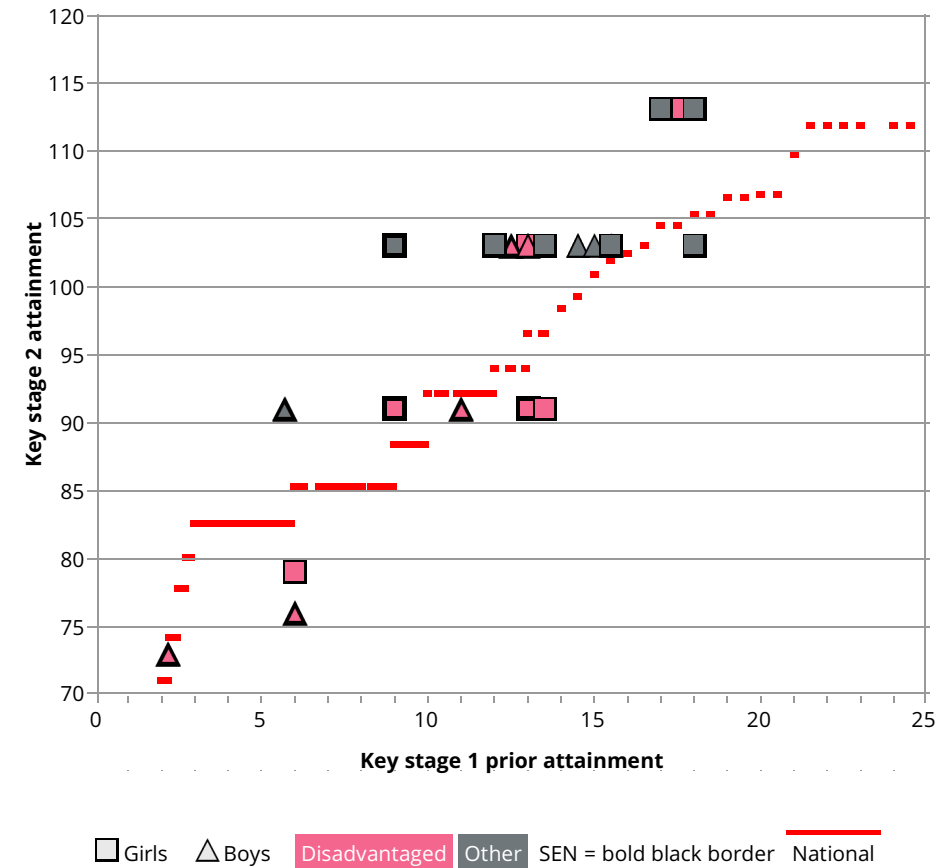
Writing (teacher assessment) attainment in 2017



Writing data is based on teacher assessments. Users should be cautious when using this data.

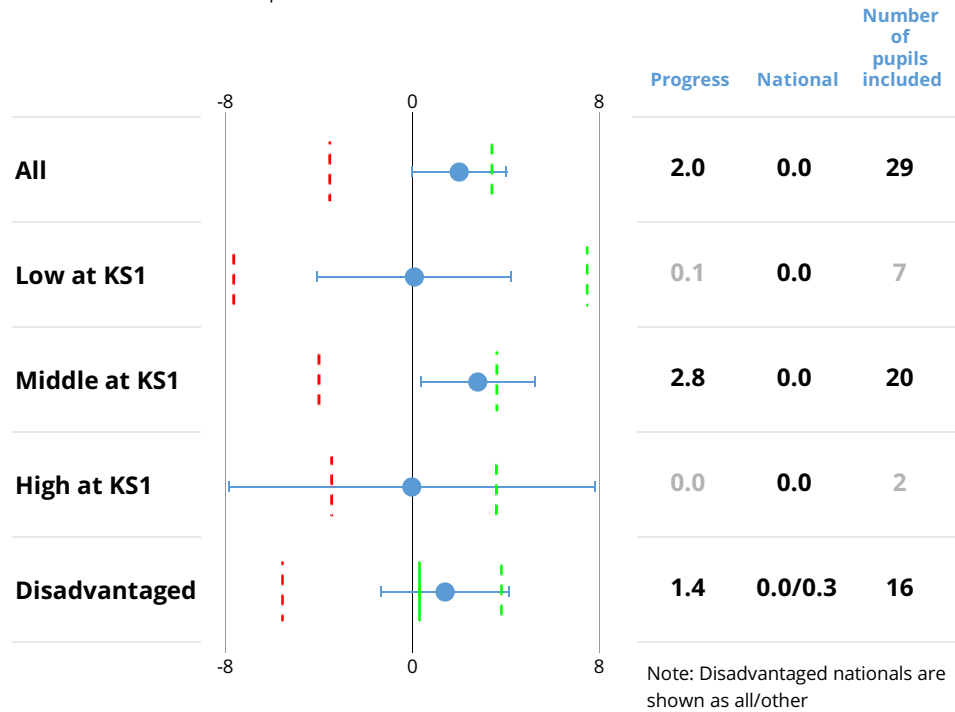
The values displayed above are rounded to one decimal place however all underlying calculations are based on unrounded data. The 'Diff no' value shows the number of pupils that the difference between school and national represents, and is always rounded down to a whole number. Prior attainment is based on overall KS1 attainment.

Writing (teacher assessment) attainment scatterplot



Mathematics progress in 2017

--- Bottom 10% - - - Top 10% — Other national

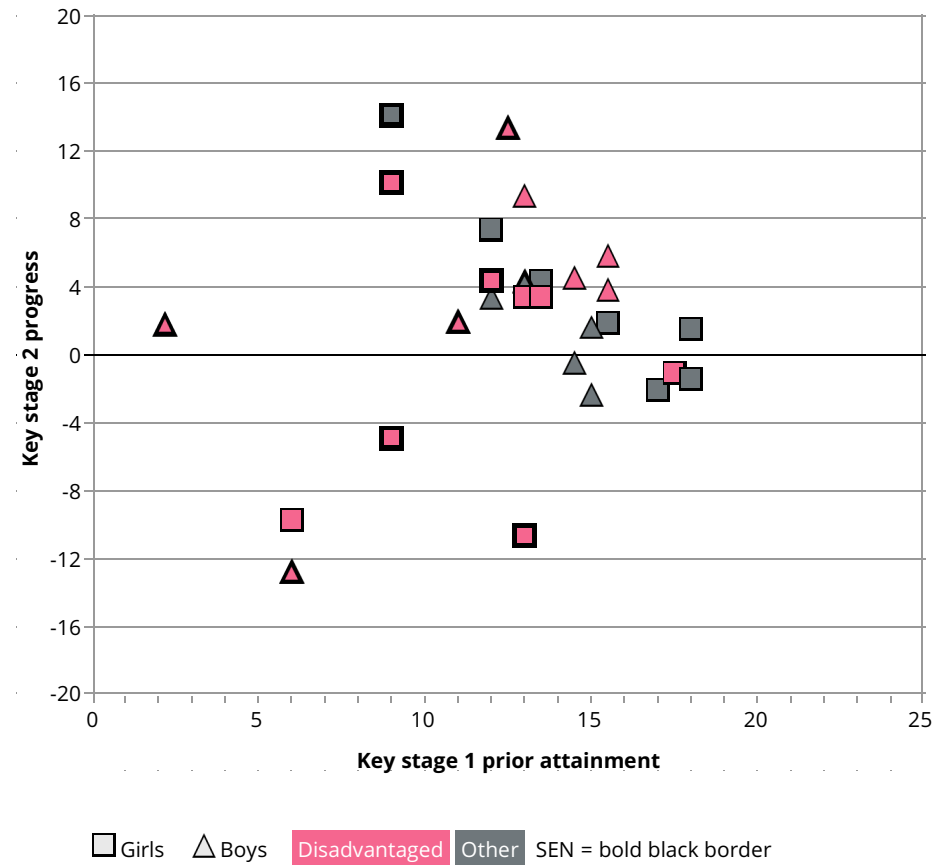


Significantly below national and in bottom 10%

Significantly above national and in top 10%

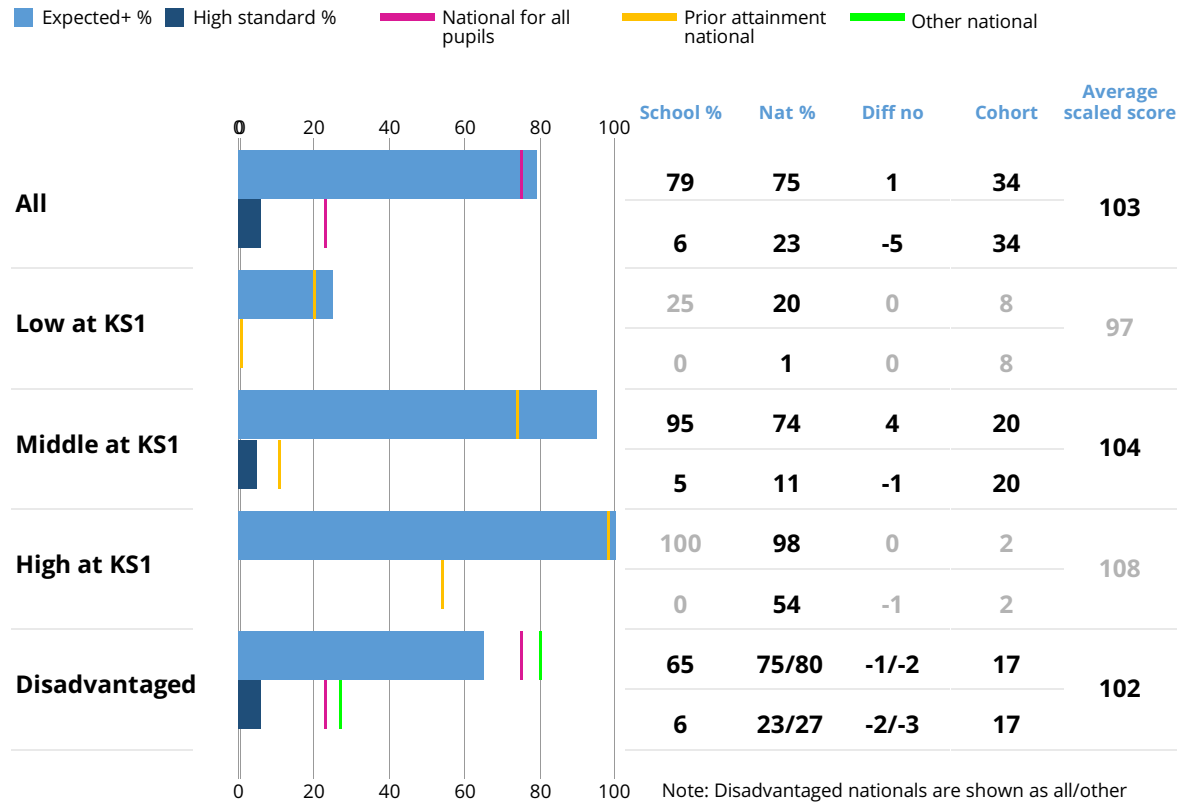
Shading based on statistical significance and top/bottom 10% will not be shown for special schools.

Mathematics progress scatterplot

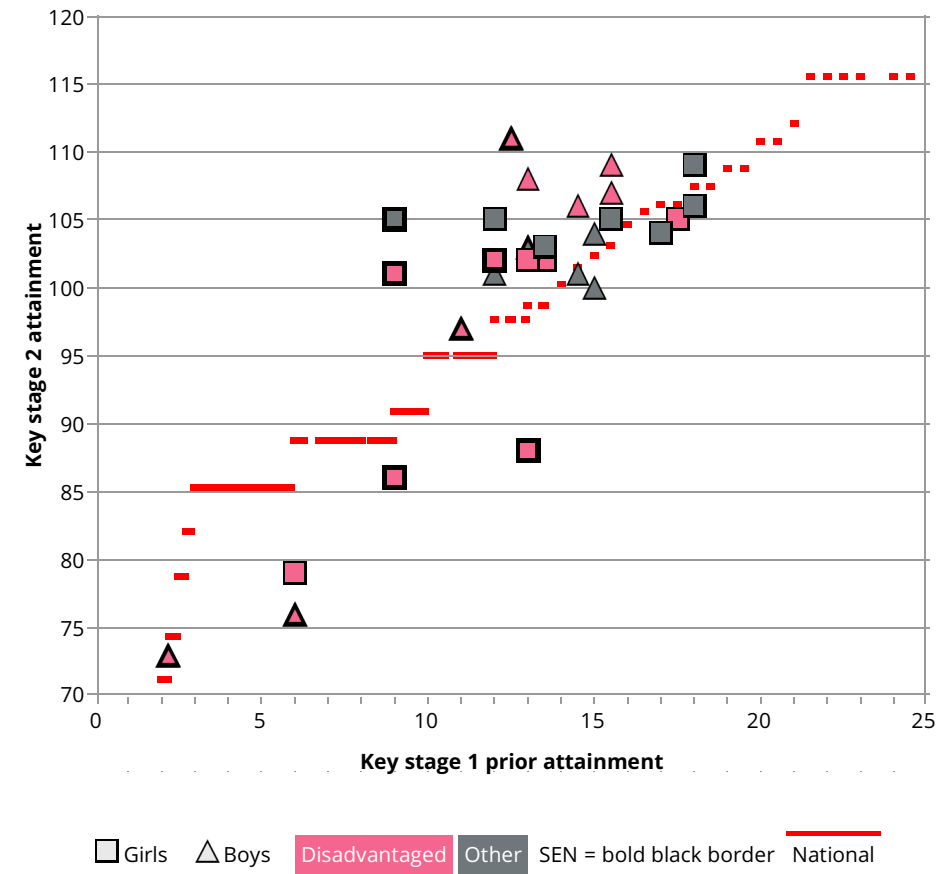


Top and bottom 10% values can be found in the percentile boundary spreadsheet alongside the guidance documents located here: <https://www.gov.uk/government/publications/using-ofsteds-inspection-dashboard-early-years-foundation-stage-profile-to-key-stage-4>. The values displayed above are rounded to one decimal place however all underlying calculations are based on unrounded data. Prior attainment is based on overall KS1 attainment.

Mathematics attainment in 2017

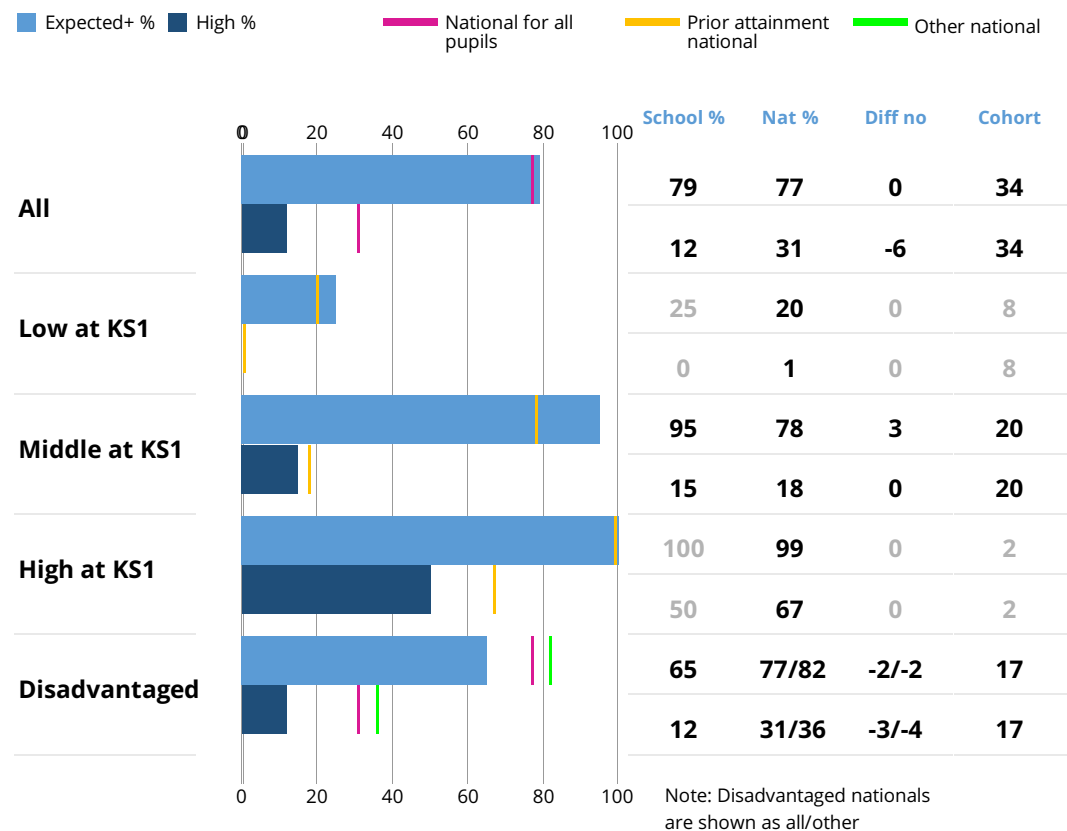


Mathematics attainment scatterplot

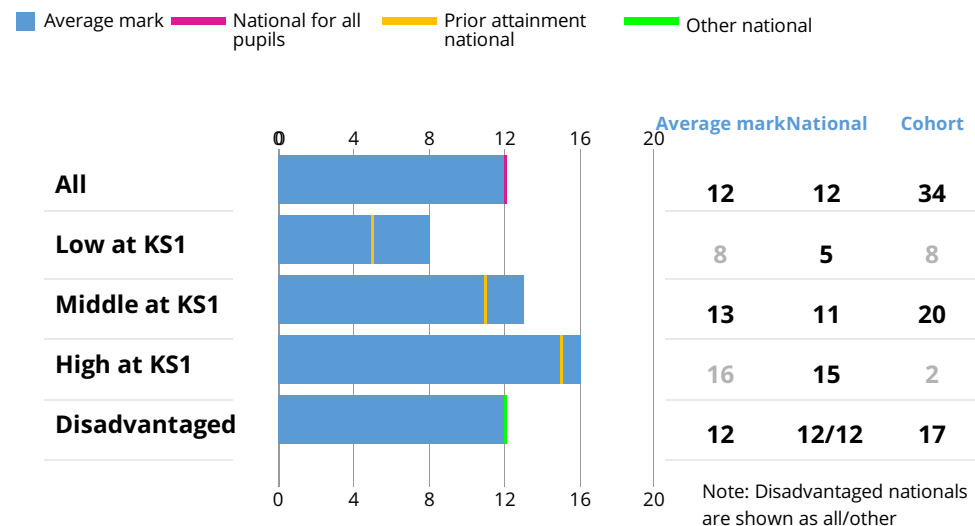


The values displayed above are rounded to one decimal place however all underlying calculations are based on unrounded data. The 'Diff no' value shows the number of pupils that the difference between school and national represents, and is always rounded down to a whole number. Prior attainment is based on overall KS1 attainment.

English grammar, punctuation and spelling (EGPS) in 2017

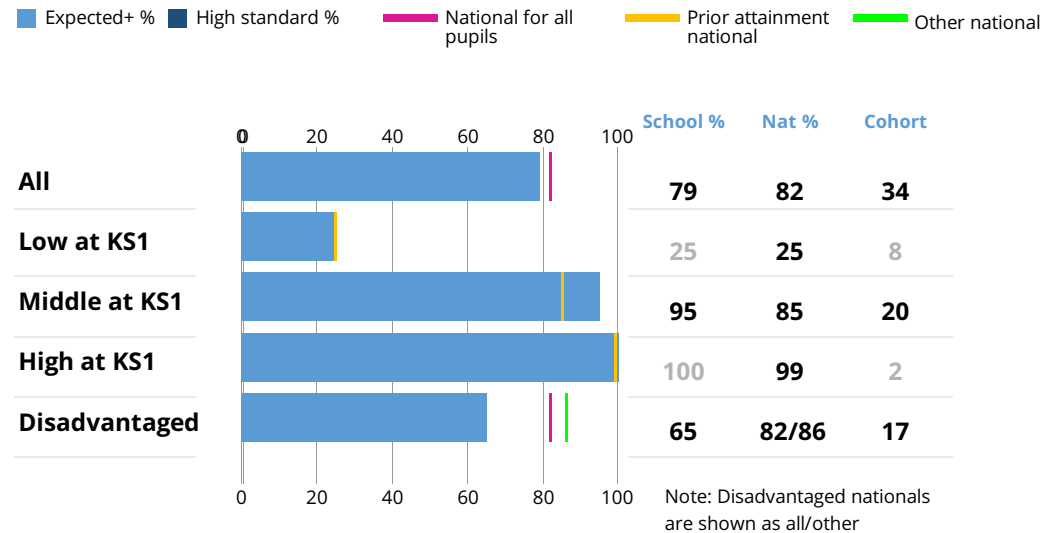


Spelling



The values displayed above are rounded to one decimal place however all underlying calculations are based on unrounded data. The 'Diff no' value shows the number of pupils that the difference between school and national represents, and is always rounded down to a whole number. Prior attainment is based on overall KS1 attainment.

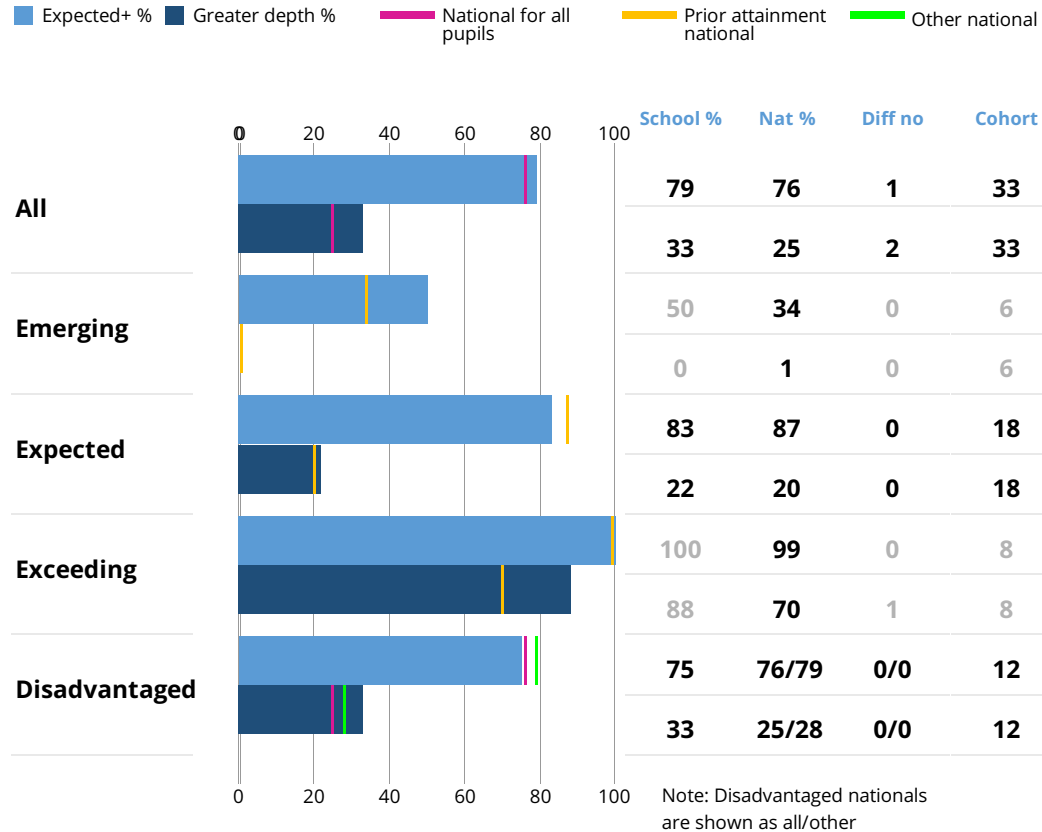
Science attainment in 2017



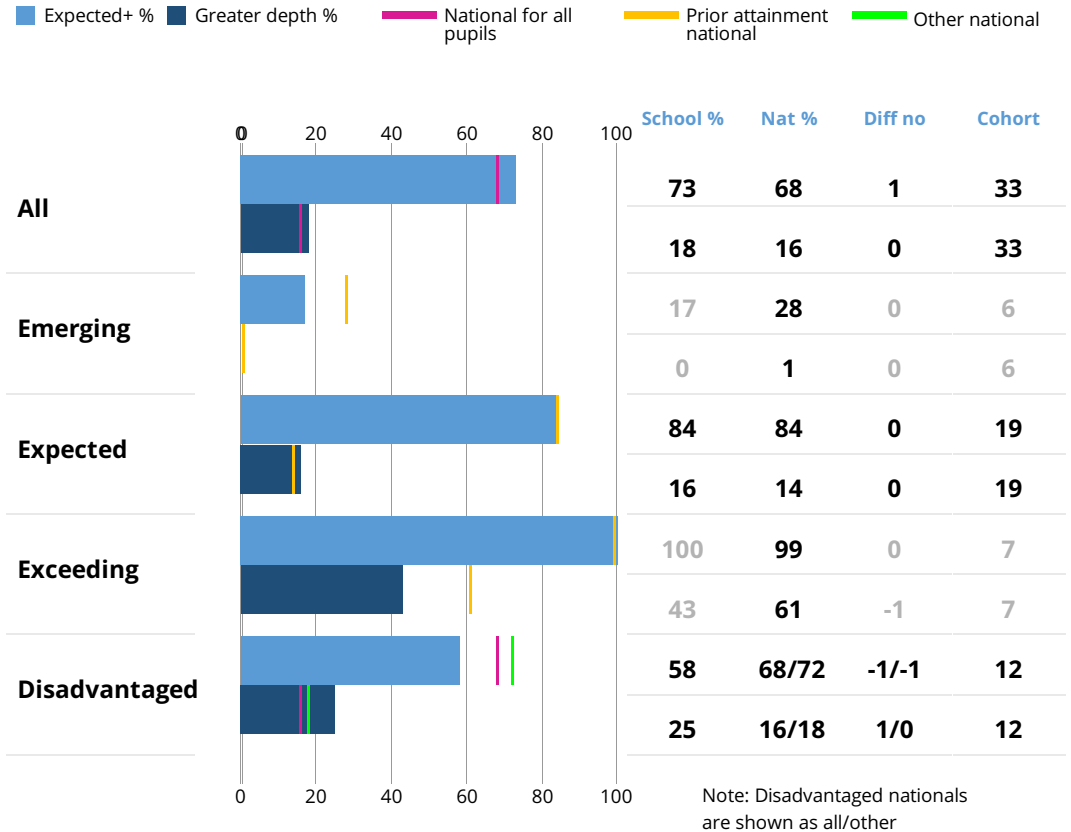
Science data is based on teacher assessments. Users should be cautious when using this data.

The values displayed above are rounded to one decimal place however all underlying calculations are based on unrounded data. Prior attainment is based on overall KS1 attainment.

Reading in 2017



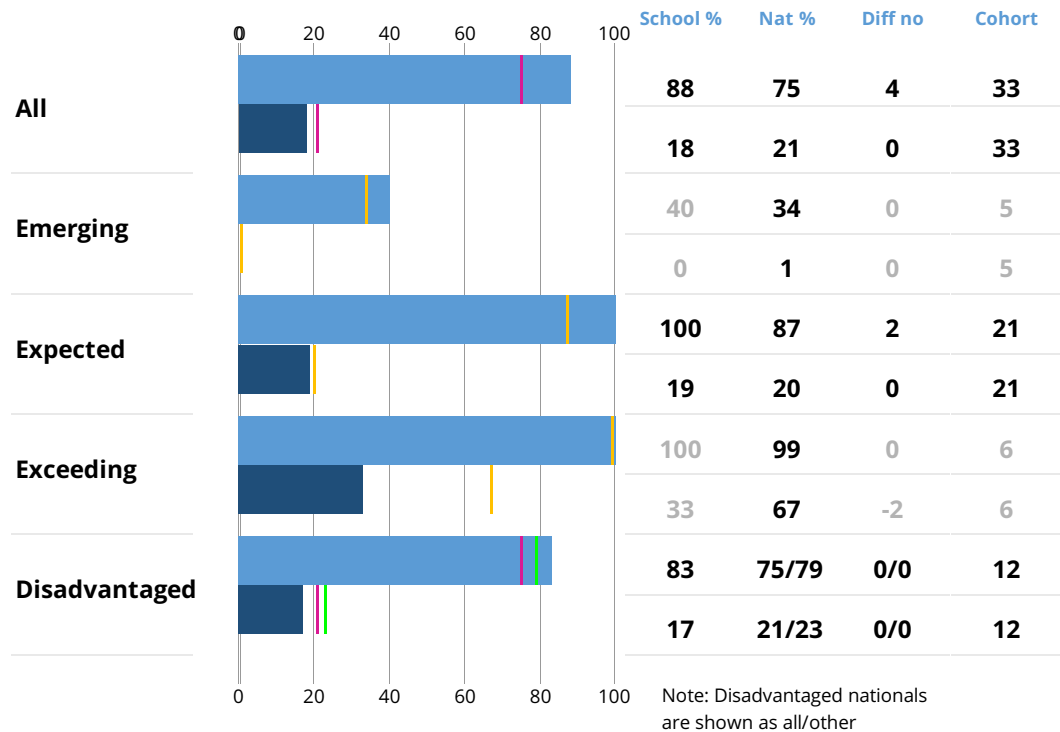
Writing in 2017



The values displayed above are rounded to one decimal place however all underlying calculations are based on unrounded data. Key stage 1 prior attainment is based on the EYFS subject specific outcome. The 'Diff no' value shows the number of pupils that the difference between school and national represents, and is always rounded down to a whole number.

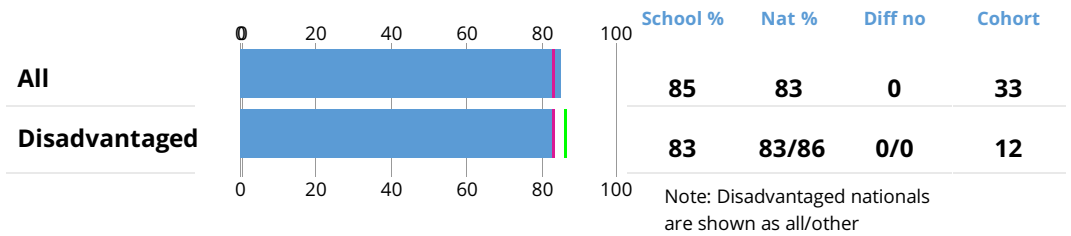
Mathematics in 2017

Expected+ % Greater depth % National for all pupils Prior attainment national Other national



Science in 2017

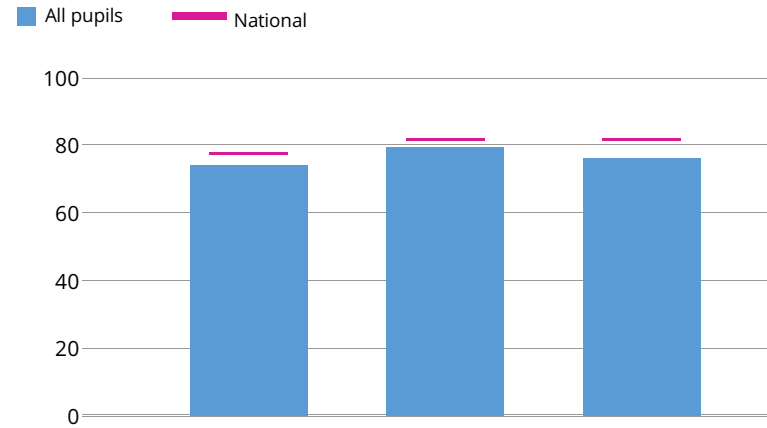
Expected+ % National for all pupils Other national



The values displayed above are rounded to one decimal place however all underlying calculations are based on unrounded data. Key stage 1 prior attainment is based on the EYFS subject specific outcome. The 'Diff no' value shows the number of pupils that the difference between school and national represents, and is always rounded down to a whole number.

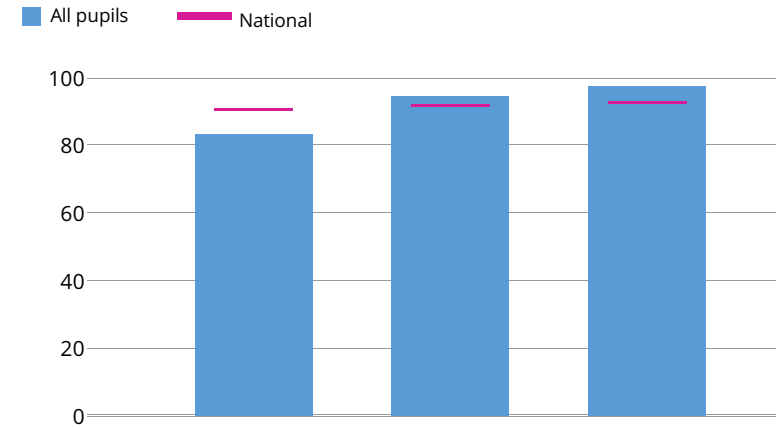
Phonics in 2017

**Proportion meeting the expected standard
Year 1**



	2015	2016	2017
School %	74	79	76
Nat %	77	81	81
Cohort	42	38	34

By end of year 2

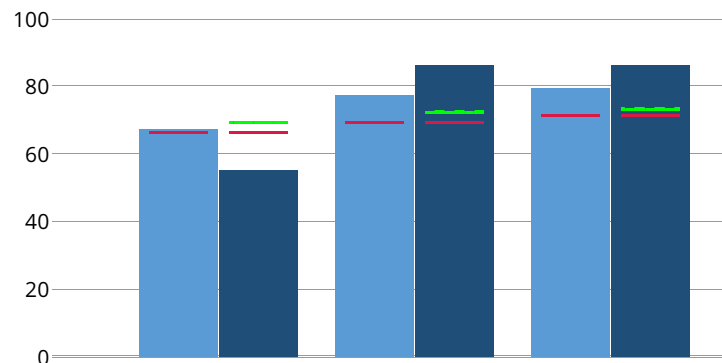


	2015	2016	2017
School %	83	94	97
Nat %	90	91	92
Cohort	36	36	33

Early Years Foundation Stage Profile

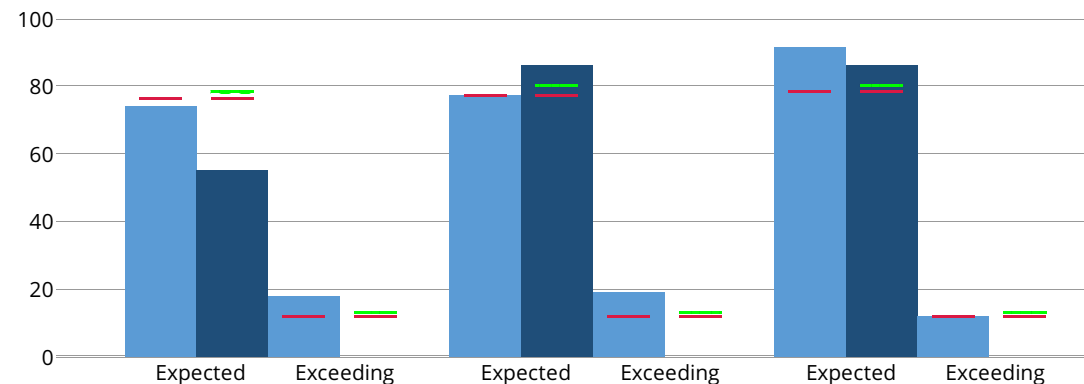
■ All pupils ■ FSM ■ National for all pupils ■ Other national

% good level of development



	2015		2016		2017	
School %	67	55	77	86	79	86
Nat all %	66	66	69	69	71	71
Nat other %	-	69	-	72	-	73
Cohort	39	11	31	7	33	7

Mathematics early learning goals

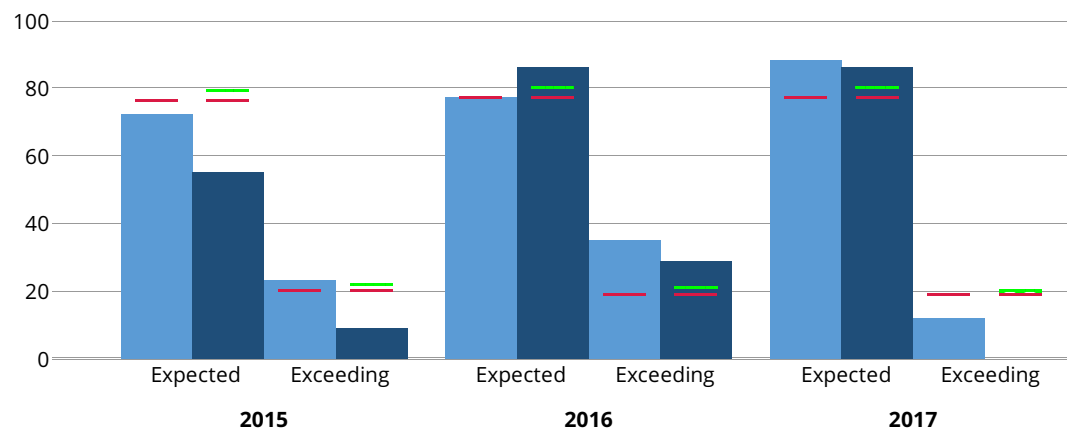


	2015				2016				2017			
School %	74	55	18	0	77	86	19	0	91	86	12	0
Nat all %	76	76	12	12	77	77	12	12	78	78	12	12
Nat other %	-	78	-	13	-	80	-	13	-	80	-	13
Cohort	39	11	39	11	31	7	31	7	33	7	33	7

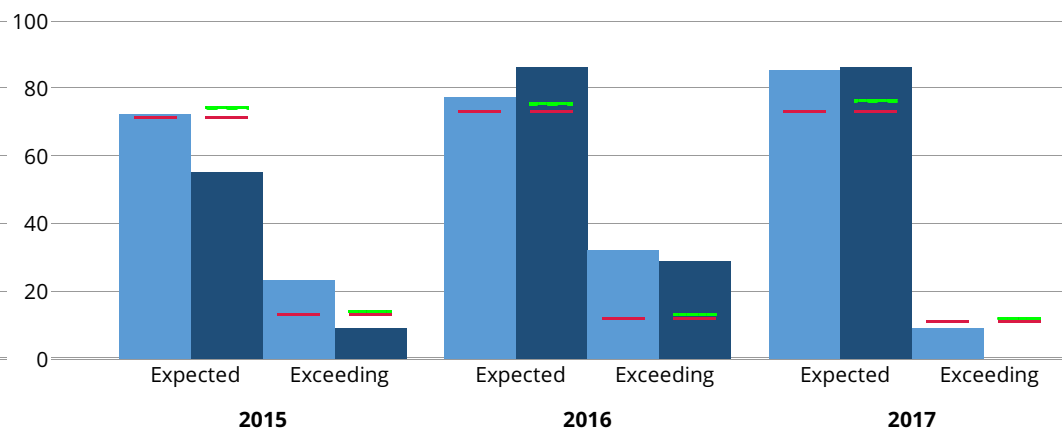
Early Years Foundation Stage Profile

■ All pupils ■ FSM ■ National for all pupils ■ Other national

Reading early learning goals



Writing early learning goals



School %	72	55	23	9	77	86	35	29	88	86	12	0	School %	72	55	23	9	77	86	32	29	85	86	9	0
Nat all %	76	76	20	20	77	77	19	19	77	77	19	19	Nat all %	71	71	13	13	73	73	12	12	73	73	11	11
Nat other %	-	79	-	22	-	80	-	21	-	80	-	20	Nat other %	-	74	-	14	-	75	-	13	-	76	-	12
Cohort	39	11	39	11	31	7	31	7	33	7	33	7	Cohort	39	11	39	11	31	7	31	7	33	7	33	7